



# PROINVEST

Unlimited Steel Solutions



**PROINVEST**  
Special Profiles

**Special Profiles**

**Splined  
shafts**

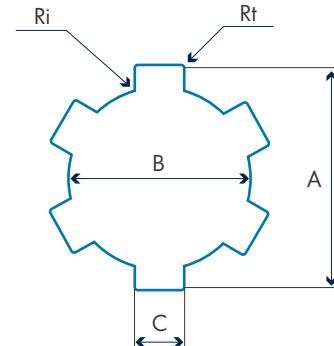


European Quality - Made in Romania



# SPLINED SHAFTS

## Technical information



Profile	Dimensions (mm)			Z	Section (mm <sup>2</sup> )	Weight Kg/m	Tolerances (mm)			Rt (mm)	Ri (mm)
	A	B	C				A	B	C		
N	A	B	C		F	G	A	B	C		
2040	14	11	3	6	121.9	0.949	-0.03 -0.20	+0.00 -0.08	+0.00 -0.08	max. 0.5	max. 0.4
2050	16	13	3.5	6	164.1	1.287	-0.03 -0.20	+0.00 -0.08	+0.00 -0.08		
2060	20	16	4	6	243.4	1.911	-0.03 -0.25	+0.00 -0.08	+0.00 -0.08		
2070	22	18	5	6	312.4	2.453	-0.03 -0.25	+0.00 -0.08	+0.00 -0.08		
2080	25	21	5	6	399.8	3.139	-0.03 -0.27	+0.00 -0.08	+0.00 -0.08		
2090	28	23	6	6	505.2	3.964	-0.03 -0.27	+0.00 -0.08	+0.00 -0.08		
2170	28.52	23.65	7.03	6	541.4	4.250	-0.03	+0.00	+0.00		
	1" 1/8						-0.27	-0.08	-0.08		
2100	30	26	6	6	590.9	4.639	-0.03	+0.00	+0.00		
							-0.27	-0.08	-0.08		
2110	32	26	6	6	638.6	5.008	-0.03	+0.00	+0.00		
							-0.27	-0.08	-0.08		
2120	34	28	7	6	741.4	5.816	-0.03	+0.00	+0.00		
							-0.27	-0.08	-0.08		
2180	34.87	28.14	8.64	6	855.5	6.22	-0.03	+0.00	+0.00		
	1" 3/8						-0.27	-0.08	-0.08		
2130	38	32	6	8	947.8	7.433	-0.03	+0.00	+0.00		
							-0.27	-0.08	-0.08		
2140	42	36	7	8	1185.3	9.302	-0.03	+0.00	+0.00		
							-0.27	-0.08	-0.08		
2190	44.37	36.25	11.00	6	1298.9	10.126	-0.03	+0.00	+0.00		
	1" 3/4						-0.27	-0.08	-0.08		
2150	48	42	8	8	1576.7	12.371	-0.03	+0.00	+0.00		
							-0.27	-0.08	-0.08		
2160	54	46	9	8	1949	15.300	-0.03	+0.00	+0.00		
							-0.27	-0.08	-0.08		